

Plot 10 Oceanview Developments, Rosewood Site, Place Road, Cowes, Isle of Wight, PO31 7UA
Asking Price £485,000

EPC Rating: Council Tax Band:

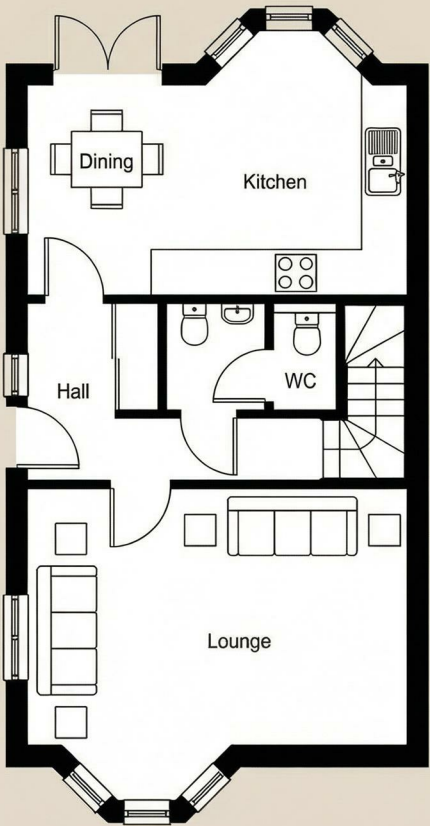


A striking new detached home in the exclusive Rosewood development, Plot 10 "The Kingfisher" offers beautifully balanced accommodation of approximately 107 sq. m, with a generous lounge, superb kitchen diner, three bedrooms, two bathrooms and a wrap-around garden, all set on the edge of Cowes in a highly convenient position for the town, mainland links and the coast.

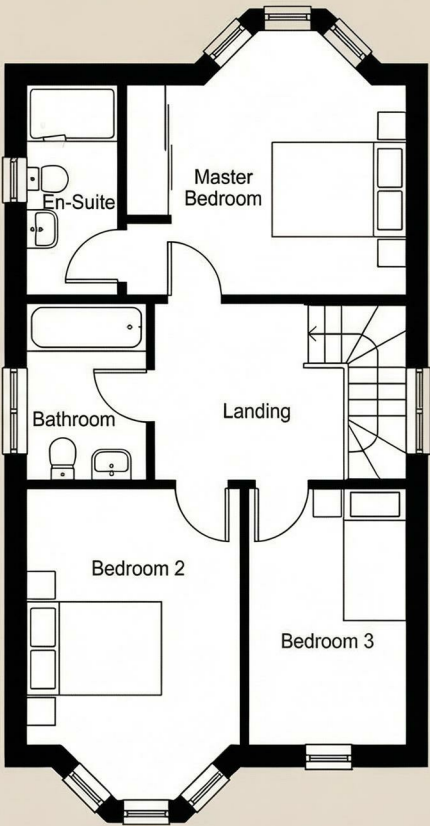
**ELLIOTT
LINCOLN**
ESTATE AGENTS & ASSOCIATES

Reassuringly familiar, refreshingly new

Call or WhatsApp: 01983 642622
office@elliottlincoln.co.uk
www.elliottlincoln.co.uk



Ground Floor Plan



First Floor Plan

Energy Efficiency Rating		Current	Potential
<i>Very energy efficient - lower running costs</i>			
(92 plus)	A		
(81-91)	B		
(69-80)	C		
(55-68)	D		
(39-54)	E		
(21-38)	F		
(1-20)	G		
<i>Not energy efficient - higher running costs</i>			
England & Wales		EU Directive 2002/91/EC	